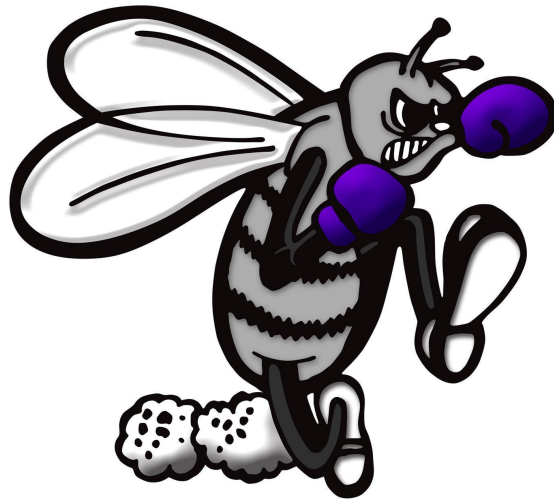

Return to In-Person Instruction and Continuity of Services (RIPICS) Plan



Start and Stay Strong

Lorenzo ISD
lorenzoisd.net

TEA Requirement: Providing Notice

Lorenzo ISD is committed to providing rigorous, TEKS-based instruction to all students in a healthy and safe environment. LISD has been working diligently to plan on how we will maintain the health and safety of students, staff, and visitors in all of our buildings. We are excited for the new 2022-2023 school year and happy about serving our community. We look forward to welcoming our students back on Thursday, August 11, 2022. **The 2022-23 calendar can be found on our website at www.lorenzoisd.net.**

The purpose of this Return to In-Person Instruction and Continuity of Services plan is to share information on how Lorenzo ISD will work tirelessly to continue our safe operation of schools while addressing the impacts of COVID-19 on student's academic, social, emotional, and mental health needs. Many schools across Texas and the nation are receiving financial support from the American Rescue Plan Act Elementary and Secondary School Emergency Relief (ESSER) federal grant to assist school districts to reopen and sustain safe operation of schools while focusing on accelerating learning that was lost due to the pandemic.

While it is not possible to eliminate all risk of further spread of COVID-19, this guidance document contains information on practices that minimize the likelihood of viral spread. These protocols and guidelines will be modified based on public health and governmental directives and advancing scientific knowledge on the transmissibility of COVID-19. We also believe that educating our students about proper hygiene techniques and necessary safety measures to prevent the spread will not only keep them safe, but also their families.

Per ESSER requirements, all Texas public schools are required to make this plan available to the public for comment. LISD has posted this document to the LISD district website and will comply with the requirements. In addition, this document must be revised and updated every six (6) months. Please address your comments and/or concerns to Kayla Morrison, LISD Superintendent, at kmorrison@lorenzoisd.net

Lorenzo ISD reserves the right to update these guidelines based on future guidance from the TEA, CDC, Governor's orders, and State and Local Officials.

COVID-19 Response Team – Lorenzo ISD has developed a COVID-19 Response Team to respond to concerns and communicate district decisions. Members of the team and email addresses are noted below:

Cheryl Norton	District Nurse	cheryl.norton@lorenzoisd.net
Tanner Bales	Assistant Principal	tbales@lorenzoisd.net
Amanda Haire	Elem Principal/Curriculum Director	amanda.haire@lorenzoisd.net
Kristopher Lamm	EPEC SSA Director	kristopher.lamm@lorenzoisd.net
Jessica Crabb	Secondary Principal/Fed Programs	jcrabb@lorenzoisd.net
Kayla Morrison	Superintendent	kmorrison@lorenzoisd.net

TEA Requirement: Prevent and Mitigate

Coronavirus disease 2019 commonly referred to as COVID-19 is a disease requiring exclusion from school under 25 Tex. Admin. Code § 97.7.

A school administrator shall exclude from attendance any child having or suspected of having COVID-19. Exclusion shall continue until the readmission criteria for the conditions are met. The readmission criteria for COVID-19 is as follows:

If symptomatic, exclude until at least 5 days have passed since symptom onset, and fever free*, and other symptoms have improved. Children who test positive for COVID-19 but do not have any symptoms must stay home until at least 5 days after the day they were tested.

*Fever free for 24 hours without the use of fever suppressing medications. Fever is a temperature of 100° Fahrenheit (37.8° Celsius) or higher.

Lorenzo ISD must identify and implement practices to prevent the virus from entering the school and mitigate or reduce the likely spread inside the school; therefore, district practices and guidelines have been established for various areas noted below:

Maintenance of Health and Safety Guidance:

- **Social and Emotional Well-Being** – Students’ social and emotional well-being are a top priority. Together, schools and families can support your child during this challenging time. With the endless COVID coverage, it is natural for your child to experience some changes in behavior and mood. Counselors and staff will continue to work closely with families and students to ease the stress. Keeping routines predictable, sharing COVID facts that are age-appropriate, making time to listen and share feelings, and reaching out to us for support are all important. We are here for you and your child(ren).
 - **Training for staff** - Teachers will be trained during in-service training days on strategies to promote students’ mental health and emotional well-being in the classroom.
- **Masks** – Per Governor Abbott’s Executive Order, GA-38, school systems cannot require students or staff to wear a mask. GA-38 addresses government-mandated face covering in response to COVID-19 pandemic. School systems must allow individuals to wear a mask if they choose to do so.

While LISD no longer requires face coverings, we encourage all students, staff, and visitors who are not vaccinated to continue to wear face coverings, especially those individuals who are at higher risk of complications and serious illness from COVID-19 as determined by CDC guidance and/or medical professionals. Signs will be posted at entrances of our campuses and facilities to remind everyone of this. Masks are available upon request for students or staff.

A student suspected of having a communicable illness (such as flu, COVID-19, Pertussis, etc.) will be offered a disposable mask until they are picked up by a parent/guardian or person listed on the emergency contact.

Face shields will be available to elementary students for voluntary use if the parent chooses for their child to wear them, such as during phonetic instructions or during lessons when staff work in close proximity to students.

Lorenzo ISD continues to encourage staff, families and students age 12 and older to get vaccinated against COVID-19. LISD administration and the nurse will assist families in finding appointments for a COVID-19 vaccination as needed. Please visit with administration for assistance.

- **Social Distancing** – Staff and students will strive to maintain three feet of social distancing in indoor and outdoor settings, to the extent possible. Classrooms will be arranged to allow for three feet of space between seating areas, as feasible.
 - It is important to note that not all students will be able to be placed 3 feet apart due to classroom size.
 - Students will be socially distanced in the cafeteria when feasible and appropriate.
- **Handwashing/Respiratory Etiquette**—Teachers will teach and review with students the proper protocols and expectations for handwashing and covering coughs and sneezes. Buildings and classrooms will have visual reminders (e.g posters) of proper protocols for hand washing and covering respiratory droplets.

In addition to hand washing, the use of hand sanitizer is also recommended. Alcohol-based hand sanitizer will be at the entrance of the buildings, in each classroom, in the hallways, and in the cafeteria. Students and staff are encouraged to sanitize their hands frequently, especially when entering the classroom, before and after handling manipulatives, and eating. Teachers will provide frequent reminders to students about the importance of using hand sanitizer.

- **Daily Campus Cleaning** – Frequent cleaning and disinfecting will promote a healthy learning and work environment for students and staff.
 - Each classroom and restroom will be disinfected daily.
 - All high touch areas will be disinfected daily.
 - Cleaning cloths will be changed for each classroom and common area to maximize room to room cleanliness.
 - Custodians will wear masks (optional) and gloves during work hours.
 - Custodial staff and teachers will use EPA registered disinfectants, approved for use against COVID-19.
 - Fogger/sprayer will be used only at the end of the school day or when an area is used by an individual who became sick during the day and was sent home due to experiencing symptoms of COVID-19.

- The cafeteria will be disinfected between lunch periods.
 - Staff will have access to disinfectant to sanitize working surfaces and shared objects after each use and during breaks in instruction.
- **Additional Cleaning Measure for COVID-19 Positive Cases on Campus**
 - If a classroom or facility is closed due to COVID-19 spread, quaternary disinfectant, which is recommended for use on the virus that causes COVID-19, will be used to defog and disinfect.
 - Custodial staff will defog and disinfect classrooms, restrooms, the weight room and all additional areas in the entire building.
- **Temperature Checks/Screening** – Per Center for Disease Control (CDC) guidelines, initial monitoring of symptoms begins at home. Parents/guardians are expected to screen their students for COVID-19 symptoms each day prior to sending their student to school.
 - **COVID-19 TESTING** - Lorenzo ISD will test any student with symptoms for COVID-19 and appropriate actions will be taken according to test results.
 - **VACCINATIONS:** Lorenzo ISD administration and nurse will assist in any way possible to aid families in getting vaccinated. Vaccinations will be available at registration on August 4 and 5, onsite for the community.

In evaluating whether an individual has symptoms consistent with COVID-19, consider the following questions:

- Have they recently begun experiencing any of the following in a way that is not normal for them?
 - Feeling feverish, or a measured temperature greater than or equal to 100.0 degrees Fahrenheit
 - Loss of taste or smell
 - Cough
 - Difficulty breathing
 - Shortness of breath
 - Headache
 - Chills
 - Sore throat
 - Shaking or exaggerated shivering
 - Significant muscle pain or ache
 - Diarrhea

IF THERE IS A COVID OUTBREAK AND LORENZO ISD MUST TAKE PRECAUTION FOR STUDENT SAFETY:

Teachers and staff are required to self-monitor. The self-screening should include teachers and staff taking their own temperature. Teachers and staff must report to the school system if they themselves have COVID-19 symptoms or are lab-confirmed with COVID-19, and, if so, they must remain off campus until they meet the criteria for re-entry as noted below.

- **Student or Staff Displaying COVID-19 Symptoms**
As per DSHS, school systems must exclude students from attending school in person who are actively sick with COVID-19. Parents must ensure they do not send a child to school on campus if the child has COVID-19 symptoms or is test-confirmed with COVID-19, until the conditions for re-entry are met.

To help mitigate the risk of asymptomatic individuals being on campus, schools may provide and/or conduct recurring COVID-19 testing using rapid tests by the state or other sources. Testing can be conducted with staff. With prior written permission of parents, testing can be conducted with students.

- o When a student has displayed symptoms of COVID-19, the school nurse will provide a clinical assessment to determine if and when a student needs to be sent home.
- o Students who are ill will be separated from their peers and should be picked up within 30 minutes and no later than 1 hour from the time the campus contacted the student's parent/guardian.
- o Other students will be removed from the classroom and taken to an alternate location on campus (e.g. go on a walk outside, move to a different classroom, etc.) so that the classroom can be disinfected.
- o District communication will be provided to the parents of students who came in contact with a COVID-19 positive student or staff member.
- o Any individuals who themselves either: (a) are lab-confirmed to have COVID-19; or (b) experience the symptoms of COVID-19 (listed below) must stay at home throughout the infection period, and cannot return to campus until the school system screens the individual to determine any of the below conditions for campus re-entry have been met.
- o In the case of an individual who was diagnosed with COVID-19, the individual may return to school when all three of the following criteria are met:
 - at least one day (24 hours) has passed since recovery (resolution of fever without the use of fever-reducing medications);
 - the individual has improvement in symptoms (e.g., cough, shortness of breath); and
 - at least 5 days have passed since COVID was diagnosed by a test..
- o In the case of an individual case of an individual who has symptoms that could be COVID-19 and who is not evaluated by a medical professional or tested for COVID-19,

such individual is assumed to have COVID-19, and the individual may not return to the campus until the individual has completed the same three-step set of criteria listed above.

- o If the individual has symptoms that could be COVID-19 and wants to return to school before completing the above stay at home period, the individual must either (a) obtain a medical professional's note clearing the individual for return based on an alternative diagnosis or (b) receive two separate confirmations at least 24 hours apart that they are free of COVID via acute infection tests at an approved COVID-19 testing location found at <https://tdem.texas.gov/covid-19/>.
- o Any person who is lab confirmed positive for COVID-19 must remain off campus until they meet all of the criteria for re-entry. If diagnosed with COVID-19 either by a positive test or assumed positive based on symptoms, the following criteria must be met to return to a LISD facility:
 - At least 24 hours have passed since recovery (resolution of fever without the use of fever-reducing medications); and
 - The individual has improvement in symptoms (e.g., cough, shortness of breath); and
 - At least 5 days have passed since symptoms first appeared.
 - If the individual has symptoms that could be related to COVID-19 and wants to return to work or school before completing the above self-isolation period, the individual must either:
 - o Obtain a medical professional's note clearing the individual for return based on an alternative diagnosis, or
 - o Return a lab test negative for COVID-19.
 - If the individual has tested positive for COVID-19 and believes the test was a false positive and wants to return to school before completing the above stay-at-home period, the individual must either:
 - o Obtain a medical professional's note clearing the individual for return based on an alternative diagnosis, though for health privacy reasons the note does not need to indicate what the alternative diagnosis is, or
 - o Obtain two PCR acute infection tests (at a physician's office, approved testing location, or other site) at least 24 hours apart that come back negative for COVID-19.
 - o Results from a COVID-19 test administered at home will NOT be acceptable for use to return to work/school after a believed false positive.

- **Close Contact**

As a reference, close contact determinations are generally made based on guidance outlined by the CDC, which notes that **individuals who are vaccinated are not considered close contacts**. Given the data from 2020-21 showing very low COVID-19 transmission rates in a classroom setting and data demonstrating lower transmission rates among children than adults, school systems are not required to conduct COVID-19 contact tracing. If school systems are made aware that a student is a close contact, the school system should notify the student's parents.

Parents of students who are determined to be close contacts of an individual with COVID-19 may opt to keep their students at home during the recommended stay-at-home period.

For individuals who are determined to be close contacts:

*Stay home for 5 days. After that, continue to wear a mask around others for 5 additional days

*If you cannot quarantine, you must wear a mask for 10 days.

*Test on day 5, if possible.

*If you develop symptoms, get a test and stay home and follow the protocol for COVID positive person.

Close contact is defined as:

- Being directly exposed to infectious secretions (e.g., being coughed on while not wearing a mask or face shield); or
- Being within six feet of an infected person for a cumulative duration of 15 minutes. Exception: in the K-12 indoor classroom setting, we can exclude students who were within 3-6 feet of an infected student if both the infected student and the exposed student correctly and consistently wore well-fitting masks the entire time. This exception does not apply to teachers, staff, or other adults in the indoor setting.

Public Health Recommendations: Except in certain circumstances, people who have been in close contact with someone who has COVID-19 should quarantine unless:

- 1) they are fully vaccinated within the last six months, or
- 2) they have been diagnosed with COVID-19 within the last three months.

Close contact includes living in the same household, caring for a sick person with the virus. Individuals are presumed infectious at least two days prior to symptom onset or, in the case of asymptomatic individuals who are test-confirmed with COVID-19, two days prior to confirming lab tests.

Vaccinated persons with an exposure to someone with suspected or confirmed COVID-19 are not required to quarantine if they meet all of the following criteria:

- Have completed the primary series of the Pfizer or Moderna vaccine within the last 6 months or the J&J vaccine within the last 2 months AND have had a booster vaccine.
- Have remained asymptomatic since the current COVID-19 exposure.

Symptomatic - Not Due to COVID or Close Contact

Students or employees who experience symptoms of COVID-19 but who have not been determined to have close contact with someone who is lab-confirmed with COVID-19 may provide COVID test results in order to be able to return to work/school prior to the 5 day period. This option is voluntary. The LISD COVID team will determine eligibility based on type of

exposure. Staff and students who do not want to participate in testing will be required to quarantine for the remainder of the 10-day period. Symptom monitoring must continue for the full 10-day incubation period.

Communication - Lorenzo ISD will continue to report to the Texas Education Agency and Texas Department of Health and Human Services, all persons who were on a LISD campus and were identified as person who was lab-confirmed positive or identified as person who was potentially exposed to someone who was lab confirmed positive for COVID-19.

Cafeteria

LISD will open up the cafeteria to all grade levels and students to eat breakfast and lunch. Students will maintain 3 feet of social distancing when possible. For the 2021-22 school year, parents will not be allowed to eat lunch with their student.

Staff Who Have COVID-19 or Who are Close Contacts

Similar to students, school systems must exclude staff from attending school in person who are actively sick with COVID-19, who are suspected of being actively sick with COVID-19, or who have received a positive test result for COVID-19. Staff may return when the re-entry conditions have been met, as described in the DSHS rule used for students and have been listed earlier in this handbook.

For staff who are NOT fully vaccinated who meet the close contact threshold with a COVID-19 positive individual, it is recommended that the staff remain off campus during the stay-at-home period.

For staff who meet the close contact threshold with a COVID-19 individual, if these staff continue to work on campus, rapid testing must be performed at the start of the day, at least once every other day until the end of day 10.

Campuses and Classrooms: Protocol for Continuity of Services

- **Visitors, Drop-off, and Pick-Up** – All campus visitors should schedule an appointment when possible. Sanitizing will occur after each parent meeting. The number of visitors in the school will be limited to ensure that students are safe; therefore, alternative meeting options may be scheduled, including virtual meetings. We highly discourage non-emergency drop-offs...i.e. snacks, lunch, Sonic, etc... All visitors who enter the building will not be required to wear a face covering but it is highly recommended for the protection of our staff and students . Individuals who proceed beyond the reception area will follow the following specific guidelines for visitors:
 - o All visitors will be subject to screening by way of a symptom screening form.

- o Visitors and staff will maintain physical distancing for ARD and other meetings in smaller conference areas.
- o If a visitor has COVID-19 symptoms (as listed above previously in this document) or are lab-confirmed with COVID-19, they **MUST** remain off campus until they meet the criteria for re-entry as noted above.

Traditional campus events such as Open House, Parent Nights, etc., will be planned but will be postponed in any COVID-19 situation. As the COVID situation flatlines, we will reevaluate how to proceed with these activities. Campuses will continue to use other means to keep parents and families up-to-date and engaged in their child's learning, including online platforms.

- **Drop-off, and Pick-up**

- o **Elementary-Arrival**

- Separate entrances will be utilized for car riders, bus riders, and walkers.
- Sanitizer stations will remain at each entrance and students can sanitize hands upon entry.
- Staff will maintain a line of sight in hallways to help ensure social distancing.
- Parents will not be allowed to walk students to classrooms.
- There will be bus procedures, based on campus specific needs.

- o **Elementary-Dismissal**

- Sibling connections will be done outside the building.
- Campus will designate staggered dismissal groups. Staggering the groups of walkers, car riders, and bus riders will help manage student movement in the building and decrease the risk of potential crowding outside at dismissal time.
- Separate entrances will be utilized for car riders, bus riders, and walkers.
- There will be bus procedures, based on campus specific needs.

- o **Secondary-Arrival**

- Early bird arrivals are strongly discouraged. Students will go directly to zero hour or designated location upon arrival.
- Staff will maintain a line of sight in hallways to help ensure social distancing.
- Sanitizer stations will be placed at each entrance and students will sanitize hands upon entry.
- Parents may not accompany students into the building.

- o **Secondary-Dismissal**

- Sanitizer stations will be placed in each classroom and common area and students will be encouraged to sanitize hands prior to exit.
- Students should leave campus and not congregate after school to help maintain social distancing.

- o **Parents picking up students during the day should call ahead so that students can be sent or accompanied to parent vehicles upon arrival. Parents will not be able to eat lunch at school until further notice.**

- **Classroom Configurations** – Lorenzo ISD will arrange student learning spaces six feet apart, as feasible. In some instances, common areas may be used for instruction with similar distancing. It is important to note that not all students will be able to be placed 6 feet apart due to classroom size.
 - Each classroom will be outfitted with the following:
 - Visual reminders of distancing requirements will be in all classrooms, marking off areas for common spaces and distancing best practices.
 - Refillable alcohol-based hand sanitizer stations
 - Access to disinfectant to sanitize working surfaces
 - Desks or tables will be socially distanced as much as instructionally possible.
 - Remove blankets, pillows, and other shared non-essential items. Blankets/towels for pre-k students will be washed on high heat settings at school several times during the week.
 - Students will have access to their own technology (a school assigned laptop/ tablet) to minimize sharing of electronic devices.
 - Students will use hand sanitizer upon entering the classroom.
 - Student materials and supplies will be placed in close proximity to students to reduce movement in the classroom.
 - When possible, eliminate communal supplies. Shared supplies will be sanitized between use.
 - Teachers will develop, teach and implement procedures that:
 - Limit student movement within the classroom such as turning in assignments, materials being passed out, etc.
 - Establish student responsibilities to clean personal areas and materials/supplies with hand sanitizer, disinfectant wipes and other self-cleaning products.
 - Relate to entering and exiting the classroom. “Clean when you enter, clean before you leave.”
 - Outline hand washing protocols and the use of classroom hand sanitizer in intermittent, scheduled hand sanitizing such as when entering or exiting the classroom.
 - Reduce the use of large table seating in classrooms and replace with desks when possible. If tables are used, limit the number of students per table and identify which seats are to be used to provide as much social distancing as possible.
 - To the extent possible, keep doors open between classes to minimize contact with doors and door handles by students and staff entering or exiting classrooms.
 - Recommended procedures will be applied to all classroom settings, including special education programs when possible and appropriate. Students’ individual needs will be addressed on a case-by-case basis.
- **Collaborative Work and Projects**
 - When possible, technology will be utilized when students are involved in collaborative work or manipulatives and/or supplementary aides.

- o Group or pair work can be implemented while maintaining physical distancing.
 - o It is recommended that students who work in pairs or groups wear a mask or shield.
 - o Students will be provided the opportunity to opt-out of physical face-to-face group or pair work.
 - o The use of outdoor space for learning will be considered when possible. Classroom groups working outside will maintain at least 12 feet of social distance from other classroom groups.
 - o Additionally, supplemental services will be grouped by grade level when possible.
- **Restrooms and Water Fountains** – Students’ physical needs are extremely important. Social distancing and hand washing will remain the priorities during restroom breaks.
 - o A system will be implemented to identify the number of occupants utilizing each restroom to mitigate the chance of exceeding maximum occupants per social distancing.
 - o Students must wash hands and then use hand sanitizer before entering the classroom.
 - o Increased disinfecting will occur throughout the school day.

Each building has a water fountain that has equipment installed to fill up water bottles. Students may bring a water bottle and refill in these fountains.

- **Materials and Supplies** – Students will be expected to use their own materials and supplies which will be kept in individually-assigned boxes. Sharing of materials will not be allowed. In instances where technology, books, calculators, etc., are used with multiple students, proper sanitation protocols will be enforced.
 - o For early childhood classrooms, nap mats will be spaced out according to physical distancing guidelines and will be sanitized daily.
 - o Signage will be posted in all classrooms regarding protocols and prevention.
 - o Multiple locations of hand sanitizer, tissues, and trash cans will be available in several locations to limit student and staff movement.
 - o Each room will be left open during transitions for no-touch entry between classes.
- **Common Areas** – Common areas include spaces that are used for meetings and collaboration. This includes computer labs, flexible spaces, campus libraries, conference rooms and other meeting rooms. In order to provide the safest environment possible in our common/collaborative spaces, while promoting disease prevention and mitigation, the following guidelines will be implemented:
 - o When needed, students will bring personal supplies from the classroom. All students and staff will be required to use hand sanitizer when entering and exiting common areas.
 - o Visual reminders will be displayed for social distancing throughout common areas.
 - o Informational graphics and markers will be posted to help with 6 feet social distancing.

- o There will be procedures for students to sanitize their spaces before and after usage.
 - o Students and staff will wash/sanitize hands upon entering and after visiting the library.
 - o High touch surfaces (i.e. table tops, chairs, door handles) will be disinfected regularly.
 - o Occupancy will be driven by available space and social distancing guidelines.
- **Meeting Spaces** – If meetings must be held in person, all social distancing protocols will be implemented.
 - o Facial coverings during substantial and moderate transmission levels, if desired
 - o Hand sanitizer will be provided
 - o Social distancing
 - o Limit the sharing of materials/supplies
- **Administrative Spaces - Reception, Offices, Conference Rooms**
 - o Facial coverings or masks should be utilized when social distancing guidelines cannot be followed
 - o Hand sanitizer will be provided in front office spaces.
 - o Distances of 6 feet will be provided between all occupied seats and workspaces, when feasible.
- **Transitions**
 - o Students and staff will follow disease mitigation safety protocols for face coverings.
 - o When transitioning between classes, students will travel corridors as far to the right as possible.
 - o Visual markers will be developed to help students maintain physical distances and adhere to established campus traffic flow in hallways.
 - o Traffic patterns will be established throughout the campus that separates individuals to the greatest extent possible.
 - o Classroom doors will be propped open to reduce high touch areas.
 - o Access to hand sanitizer will be provided throughout the campus.
- **Elevators**
 - o Only students and staff with a physical impairment or the need to move large/heavy equipment will be able to use the elevator.
 - o No more than 4 people will ride in the elevator at the same time.
 - o Masks may be worn by adults when on the elevator.
 - o Access to hand sanitizer will be provided throughout the campus.
- **Additional Instructors in Classrooms** – In certain instances, additional staff members may be assigned to classrooms to instruct specific students. These individuals will sanitize prior to entering and exiting the classroom, and masks will be required as they interact with students when social distancing cannot be applied.

- **Outdoor and Off Campus Activities**

- Campuses will limit students from leaving campus after school prior to travel or start of extra-curricular or co-curricular activities when possible.
- Student participation in academic contests (UIL) will only be attended if specific guidance is provided by an authorized entity (e.g., TEA, the UIL, etc.)

- **On Campus Activities**

- Any school wide events that are approved to be held on campus need to adhere to social distancing requirements outlined by TEA and UIL.

CONTINUITY OF EDUCATIONAL SERVICES:

Lorenzo ISD is ready to receive all students for the new school year! LISD has taken and will continue to take actions to ensure continuity of services, including but not limited to services to address students' academic needs due to unfinished learning and their social, emotional, and mental health needs. As we move into the new school year, we affirm our commitment to provide quality instructional opportunities to prepare our students for the future.

Early data indicates that school closures and disruptions during the pandemic have resulted in unfinished learning for many students. To address this, LISD is proud to announce that it has received a services grant from TEA which allows the district access to tailored, targeted support to address the challenges posed by COVID.

ESSER III & II funds will be used in several ways to address student and staff needs. The goal of these funds is to close learning gaps and improve student outcomes in an inclusive and supportive school community. LISD will support teachers through coaching and professional development and provide additional support staff to support students identified as EL, Special Education, and At-Risk. A significant area of focus is on recovering the learning loss through the use of our acceleration plan. High dosage tutoring and extending instructional time strategies to help students make academic gains will be implemented. Student and staff social and emotional needs are an important component of instruction. The district counselor will be available to help provide mental health support. Additional instructional priorities include technology enhancements.

Closing student learning gaps also requires steps beyond development and refinement of the district's curriculum. Campuses will engage in data driven meetings focused on core content instruction that analyzes student data through progress monitoring with the goal of meeting grade level standards as measured by various measures (i.e. STAAR, CCMR). The district has refined and reinforced a plan to assist teachers and track student growth.

Social/Emotional Needs

Lorenzo ISD employs three school counselors, two are full-time and one is part-time. The counselors are well trained to provide support and resources to address the trauma that students, families, and staff have experienced due to the pandemic.

The school counselors promote academic, career and social/emotional success for all students as part of a strong Tier 1 counseling program and provide assistance regarding situational concerns related to the pandemic such as anxiety, depression, grief and loss, or difficulty transitioning back to in person learning. The counselors provide referrals to school and community resources that treat mental health issues (suicidal ideation, violence, abuse and depression) with the intent of removing barriers to learning and helping the student return to the classroom.

Periodic Review and Revision Plan

During the period of the American Rescue Plan Act of 2021 Elementary and Secondary School Emergency Relief Fund (ARP ESSER III) (until September 2023), Lorenzo ISD will periodically review and, as needed, revise its plan for the safe return to in-person instruction and continuity of services. The plan will be reviewed at least every six months, and LISD will seek and take into account public feedback during the review process. Any revisions made to this plan will include updated public health guidance from federal, state, and local health authorities.

Making The Plan Available to the Public

Lorenzo ISD has taken the following steps to make this plan available to the public:

- The Return to In-Person Instruction and Continuity of Services plan is posted on the LISD Webpage www.lorenzoisd.net under the ESSER tab on the COVID page.
- The plan is available in English and Spanish.
- For any questions on the plan, please contact the Superintendent at 806-634-5591.

Continuity of Services: Meals and Transportation

- **Meals** – Lorenzo ISD must comply with child nutrition guidelines. Depending on the number of students in the school, students may have meals in both the cafeteria and in classrooms.
 - Cafeteria staff may wear face coverings, will wear gloves and will follow all health and safety protocols..
 - Students will be encouraged not to share food and drink.
 - Cafeteria capacity will be based on current guidelines. Physical distance will be provided around each occupiable seat, as feasible. Lunch tables will be spread out across the cafeteria to maximize space between groups.
 - Signage and staff will reinforce physical distance and traffic patterns in the cafeteria.
 - Cashiers will type in id's on keypad or individual id cards will be provided and scanned.

Start and Stay Strong! *RIPICS Plan*

Revision action by Board: 8-15-22

- o Hand sanitizer stations will be available at entrances and exits of the cafeteria.
 - o Lunches will be staggered to limit the number of students in the cafeteria at the same time.
 - o If Lorenzo schools must close to a COVID-19 outbreak, then meals will be prepared and distributed on a weekly or bi-weekly basis by school staff. Families will be informed on when and where to pick up their students' meals.
- **Transportation**
 - o Parents/guardians are expected to screen their students for COVID-19 symptoms each day prior to sending their student to board the bus.
 - A student should not board the bus or attend school if they have a measured temperature greater than or equal to 100.0 degrees Fahrenheit and guidelines must be followed before he/she is allowed to return to school.
 - o When possible, schools will open the windows to allow outside air to circulate in the bus.
 - o Buses will be thoroughly cleaned after each bus trip, focusing on the high-touch surfaces such as bus seats, steering wheels, knobs, and door handles. During cleaning, open windows to allow for additional ventilations and air flow.

Continuity of Services: Electives: P.E., CTE Courses, Other Electives, Cheer, Athletics, etc.

- **Physical Education Classroom Protocols**
 - o Physical Education classes will resume normal activity with precautions being taken for appropriate distancing and encouragement of respiratory etiquette.
 - o Procedures will be implemented in the locker rooms to limit social distancing.
 - o Equipment will be disinfected after each use.
 - o Sanitizing areas and access to handwashing will be provided.
- **CTE Courses** – CTE courses include hands-on experiences. Social distancing and sanitation requirements will be further defined and communicated prior to the beginning of school.
- **Specialized Classrooms**
 - o When appropriate, students will be provided face shields instead of facemasks for safety when there is an increased risk of burn or injury.
 - o Specialized equipment will be sanitized between each use. There will be adequate supplies to minimize the sharing of high touch materials or limit use of supplies of equipment to one group of students at a time.
 - o Procedures and protocols will be put into place to address locker rooms. Protocols will be in place for disinfecting of equipment, students changing clothes, students showering, distancing of students, etc.
- **Other Electives** – Each course will be reviewed individually to ensure that social distancing and sanitation requirements are established and communicated prior to the beginning of school.

- **Elementary Recess**
 - Campuses will consider limiting the number of students per recess group. Staggered schedules can be utilized when needed.
 - All students and staff will be required to use alcohol-based hand sanitizer before entering the playground and upon exiting the playground.

- **Elementary Specials**
 - PE classes will be conducted outdoors whenever possible. Appropriate social distancing measures will be followed.
 - Students will use their own supplies when possible.
 - Music and PE equipment will be sanitized and wiped down after each use.
 - All students and staff will be required to use alcohol-based hand sanitizer before entering and upon exiting.

- **Cheer** – Practices and performances will be conducted following safety protocols provided by guidance from UIL and TEA. This will include COVID screening, group sizes, sharing and sanitizing of equipment, locker room usage, etc.

- **Athletics**– Practices and performances will be conducted following safety protocols provided by guidance from UIL and TEA. This will include COVID screening, group sizes, sharing and sanitizing of equipment, locker room usage, etc.
 - Athletic practices and contests will be conducted following safety protocol provided by guidance from UIL and TEA. This will include COVID screening, group sizes, sharing and sanitizing of equipment, locker room usage, etc.
 - Hand sanitizing stations will be in gym facilities and equipment will be sanitized on a regular basis.
 - Locker room use will be determined by TEA/UIL. If locker rooms can be accessed, all locker room space will be utilized to follow social distancing guidelines.
 - Bus travel will follow transportation guidelines provided by TEA.
 - Spectator attendance at games and contests may be limited based on TEA and UIL guidelines. Ticketing for events may be utilized to control capacity of facilities.
 - Event procedures will be in place to minimize face-to-face interactions.
 - Separate entrances and exits may be utilized and event doors may be propped open to minimize physical contact with handles.
 - Spectator seats may be marked and/or configured in a way to enforce social distancing.
 - Concessions and/or concession sales may be limited to encourage social distancing and to follow health and safety guidelines.

Continuity of Services for Special Programs

- **Program Participation and Services** – Students currently participating in special program services, e.g., special education, 504, Bilingual/ESL, etc., will continue to receive services whether

through face-to-face learning. Parent meetings may be held using virtual meeting platforms in extenuating circumstances.

- **Evaluations and Testing** – District protocols have been established to evaluate students who have been referred for special programs. Social distancing and/or personal protective equipment (PPE) will be used, as appropriate.

Extracurricular and After-School Program

- **Extracurricular Programs** – Each program will be evaluated on a case-by-case basis to determine implementation guidelines. Program sponsors will provide information to students and parents/families as information is available.
- **After-School Program** – The before/after-school program will be available for face-to-face students only. Pre-registration will be required through ACE. This program will follow the same sanitation and social distancing requirements established during the regular instructional day.

Parent Communication

Providing families with clear and concise communication through the following outbound channels:

- Email/text messages (will be collected and registration)
- Social media
- Website
- Newsletters
- School Messenger system

TEA Requirement: Respond & Reporting

Lorenzo ISD must identify and implement responsive actions to address the situation if there are lab-confirmed cases in a school.

Required Actions if Individuals with Lab-Confirmed Cases Have Been in a School

- 1) *If an individual who has been in a school is test-confirmed to have COVID-19, the school must notify its local health department, in accordance with applicable federal, state and local laws and regulations, including confidentiality requirements of the Americans with Disabilities Act (ADA) and Family Educational Right and Privacy Act (FERPA).*
- 2) *Upon receipt of information that any teacher, staff member, student or visitor at a school is test-confirmed to have COVID-19, the school must submit a report to the Texas Department of State Health Services via an online form. The report must be submitted each Monday for the prior seven days (Monday - Sunday).*